

AHST 3322-001 (27179)
History of Modern Architecture
Dr. Charissa N. Terranova
University of Texas at Dallas
Spring 2017
Tu-Th 2:30-3:45
SOM 11.206

Tuesday January 31 – Thursday February 2
Frank Lloyd Wright and the Myth of the Prairie PART II

John Lautner:
From Googie Architecture to Spectacular Homes



FRANK LLOYD WRIGHT WITH APPRENTICES AT TALIESIN
WEST. JOHN LAUTNER IS SITTING AT THE TABLE BEHIND
MR WRIGHT

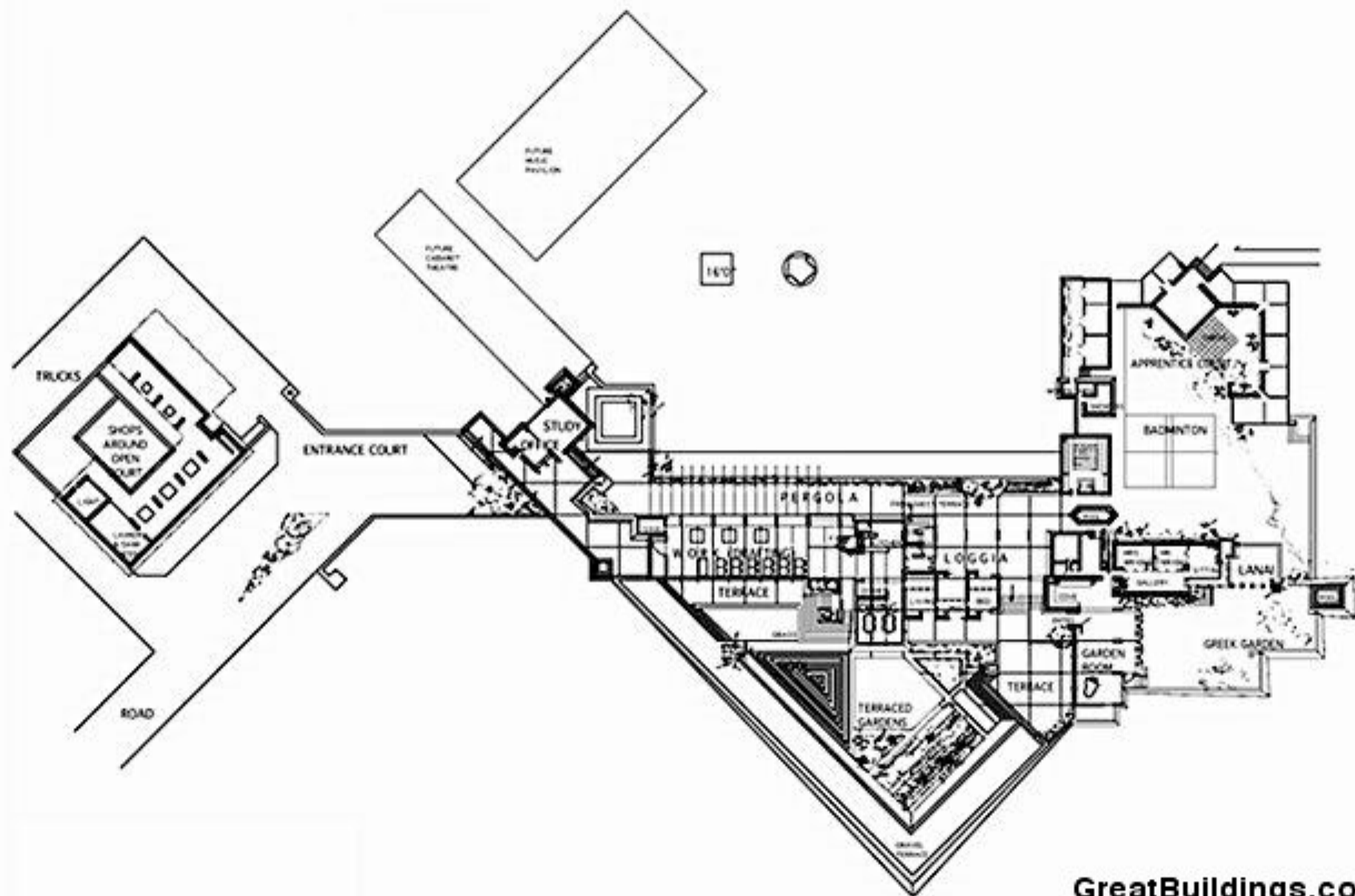


Training with Wright: Passing on “Organic Architecture”
Frank Lloyd Wright Apprentices with Broadacre City Model, 1934 (Lautner sixth from left)



Frank Lloyd Wright, Taliesin West,
Scottsdale, AZ, 1937



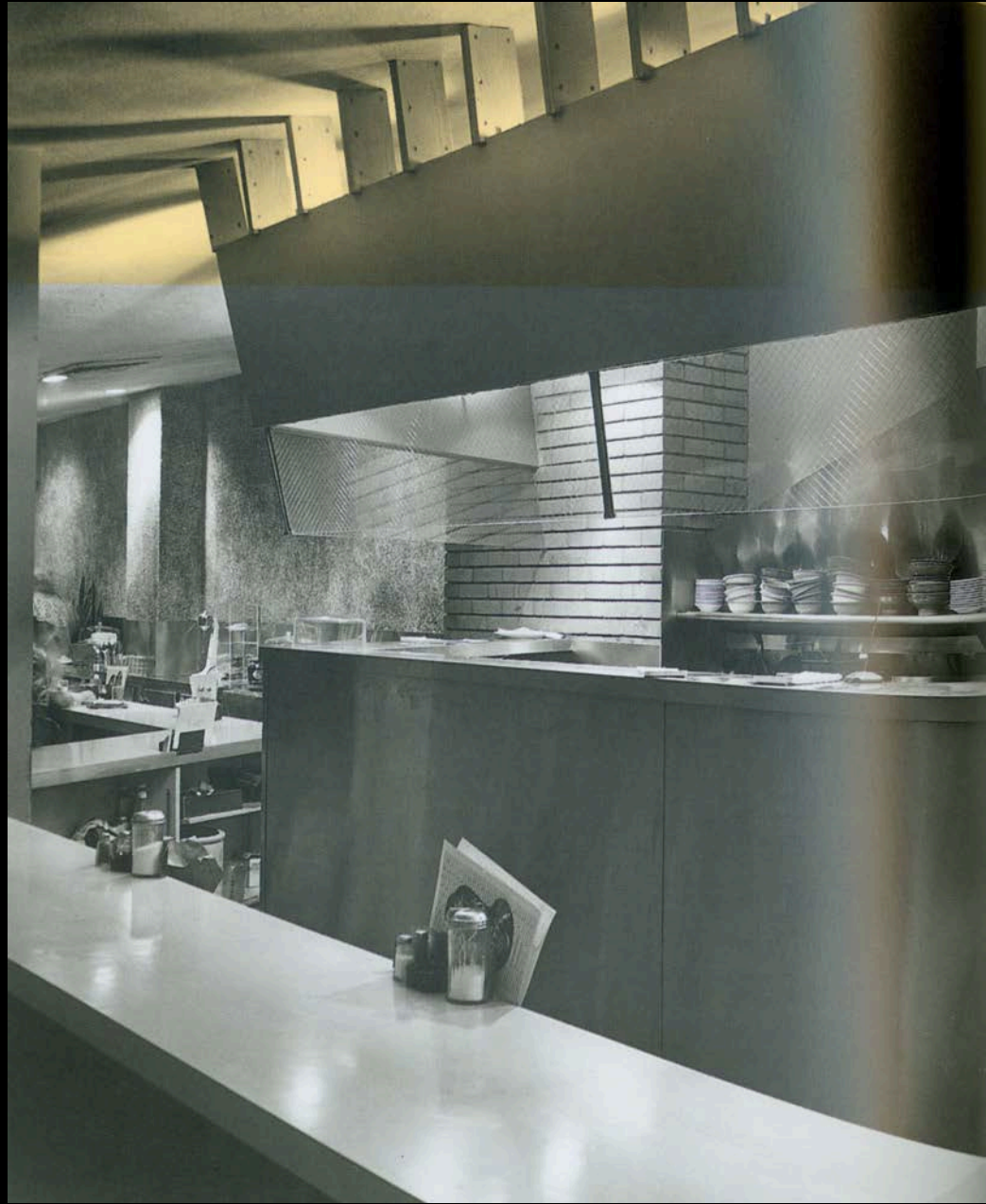


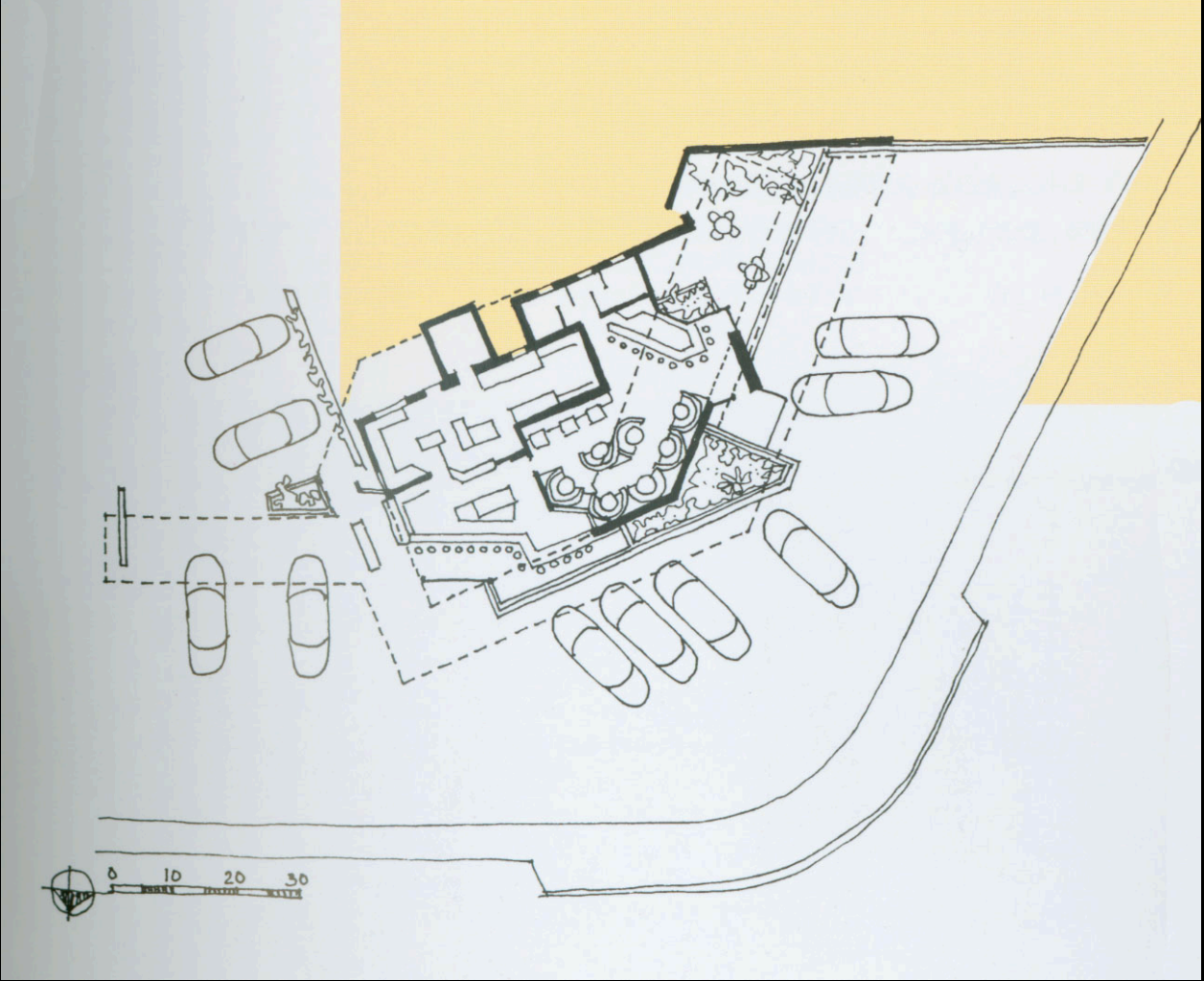


Googie Architecture
John Lautner



John Lautner with Douglas Honnold, Coffee Dan's, 1946





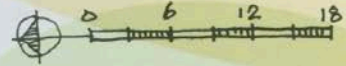
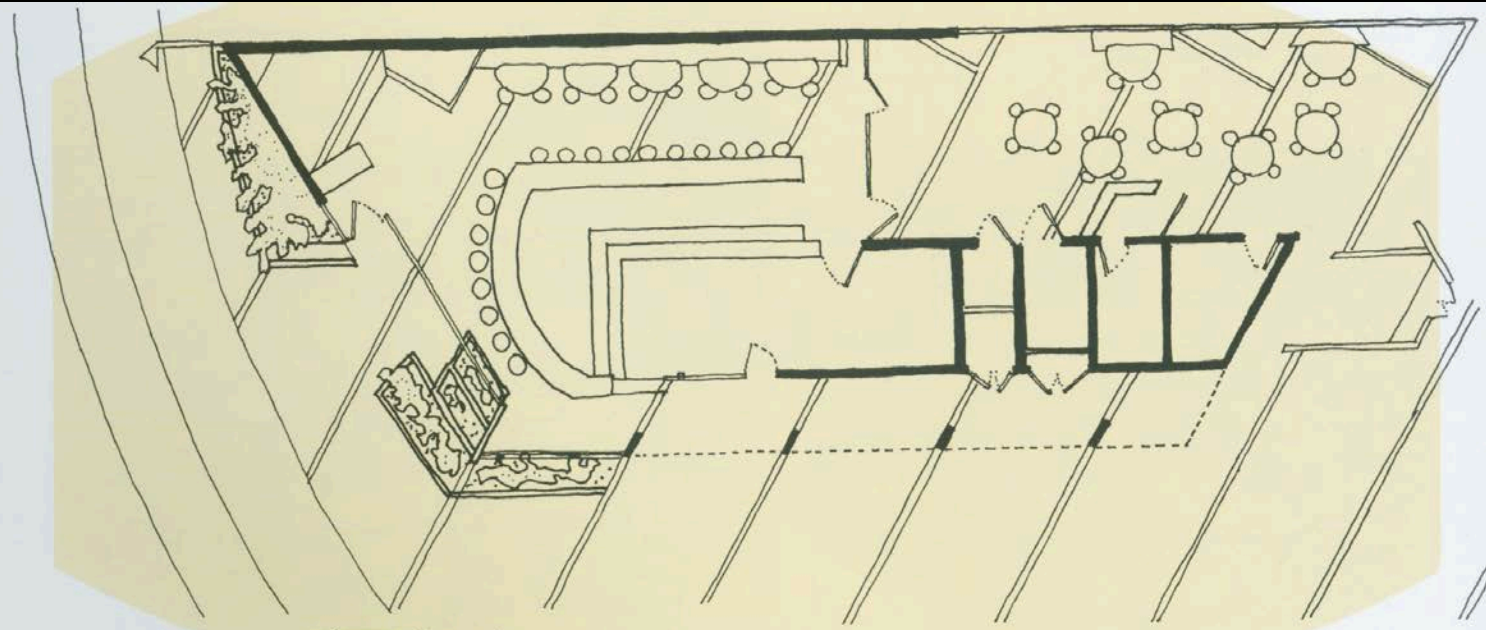
John Lautner, Henry's Drive-In, Glendale Blvd.,
Glendale, 1947



John Lautner, Googie's, Sunset Blvd, LA, 1949

Googie's.
1949.

John Lautner, Sunset Boulevard at Crescent Heights, Los Angeles. Demolished.
The red steel roof gets a running start along the parking-lot side before it leaps upward at the street, tethered tenuously by the rocklike anchor at the left. Googie's jaunty angles continued to mobilize the animated rhythms of the strip until it was replaced in the 1990s by a mini-mall.



Gogie's,
1949.

John Lautner, Sunset Boulevard at Crescent Heights,
Los Angeles, California. Demolished.
Plan.



John Lautner, Henry's Pomona, Foothills Blvd., Pomona, 1957

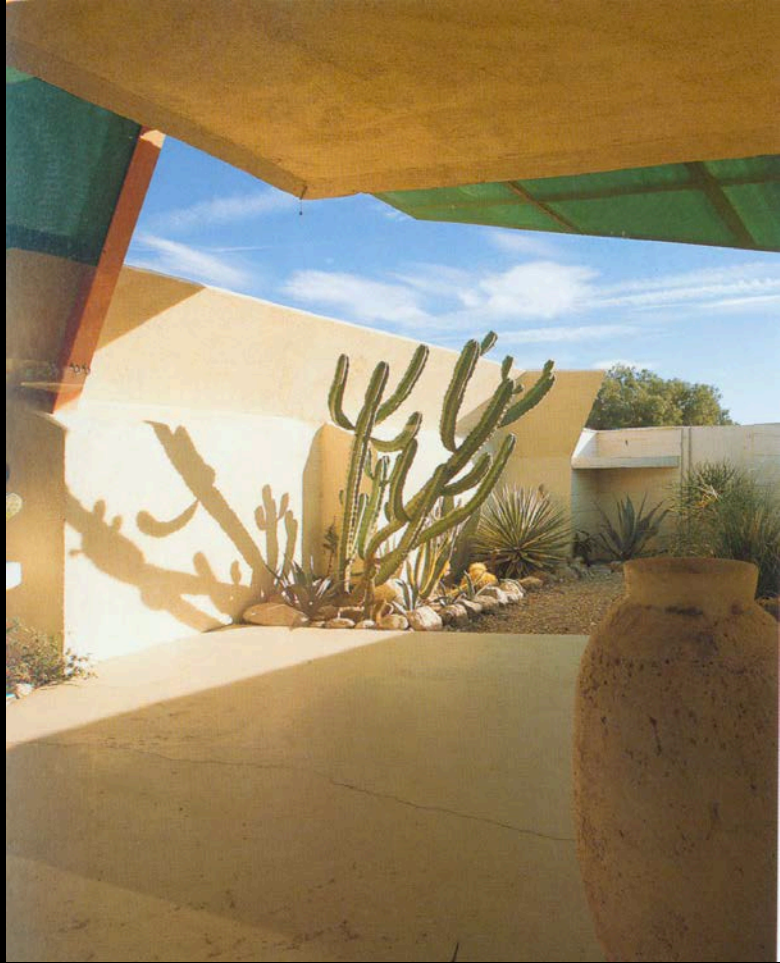


John Lautner, Desert Hot Springs Motel, 1947





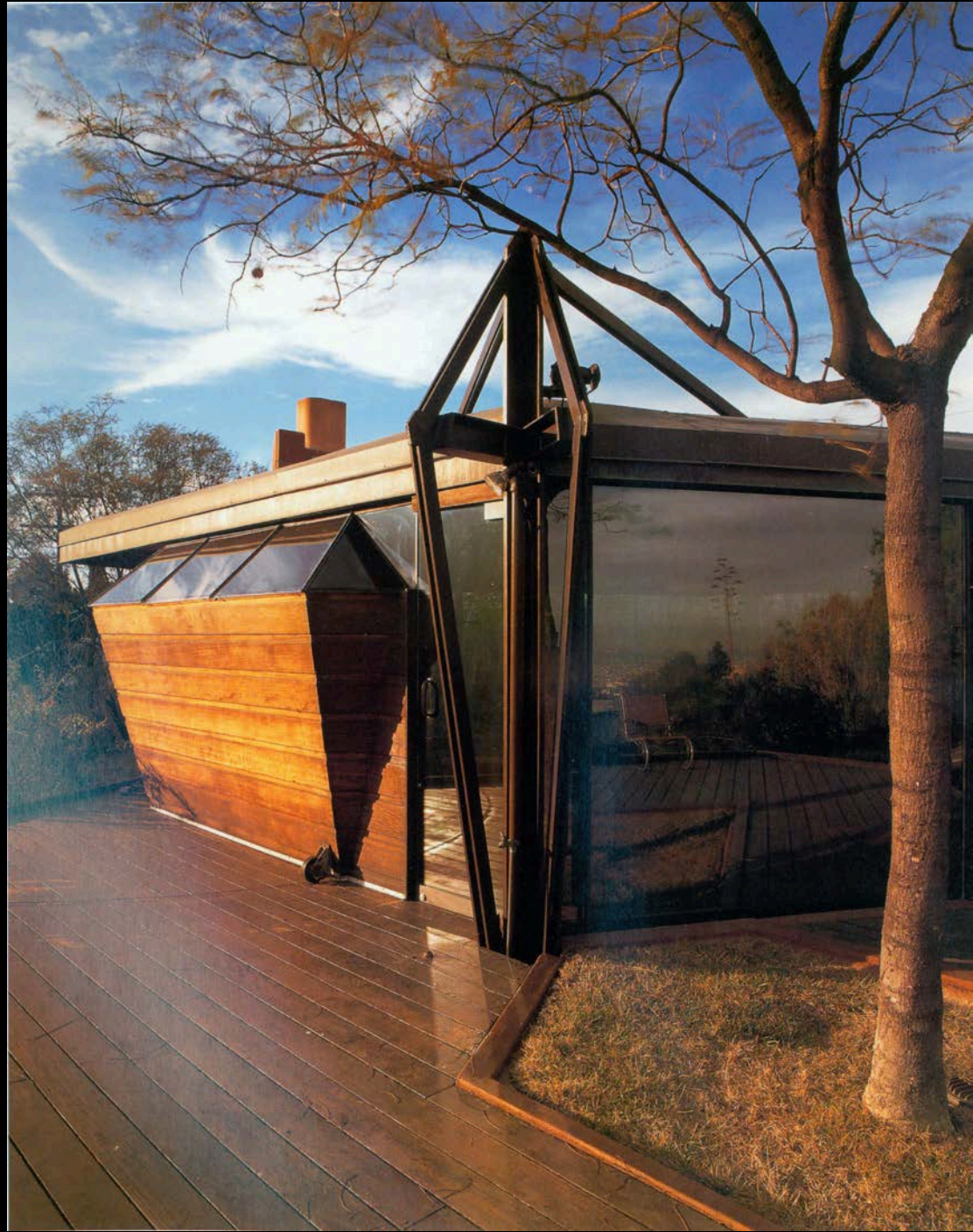






John Lautner, Carling
House, Los Angeles, 1947











John Lautner, Malin House (Chemosphere), Los Angeles, 1961













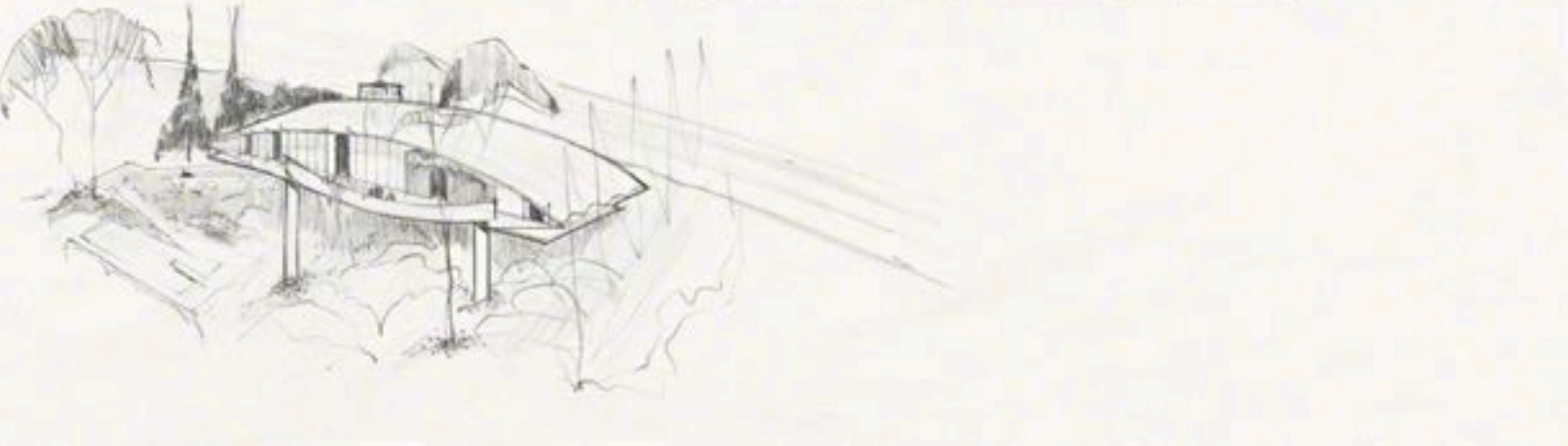
John Lautner, Garcia
House, Los Angeles,
1962







ELEVATION *1/20*







John Lautner, Elrod House, Palm Springs, 1968







