

Modern Architecture
AHST 3320-501
26372
Dr. Charissa N. Terranova
University of Texas at Dallas
Spring 2013
Wednesday 7:00-9:45
JO 4.122

04/24/2013

Critical Regionalism and Bilbao Effect

[Rethinking] Critical Regionalism



Grant Wood, *Midnight Ride of Paul Revere*, 1931





Towards a Critical Regionalism:
Six Points for an Architecture of Resistance
by Kenneth Frampton
(1983)

- Culture and Civilization
- The Rise and Fall of the Avant-Garde
- Critical Regionalism and World Culture
- The Resistance of the Place-Form
- Culture versus Nature: Topography, Context, Climate, Light, and Tectonic Form
- The Visual versus the Tactile

Modernism



Le Corbusier, Villa Savoye, Poissy,
1928-31



“Universal Civilization”



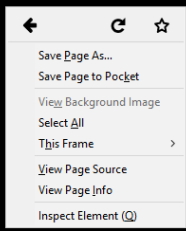
“Everywhere throughout the world, one finds the same bad movie, the same slot machines, the same plastic or aluminum atrocities, the same twisting of language by propaganda, etc...”

Paul Ricoeur
quoted by Kenneth
Frampton

The fundamental strategy of Critical Regionalism is to mediate the impact of universal civilization with elements derived *indirectly* from the peculiarities of a particular place.

Kenneth Frampton

Humanizing Modernism, or #6. The Visual Versus Tactile





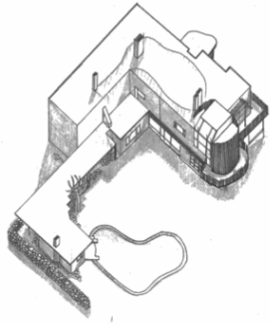
Alvar Aalto, Villa Mairea, 1938-39 Noormarkku, Finland



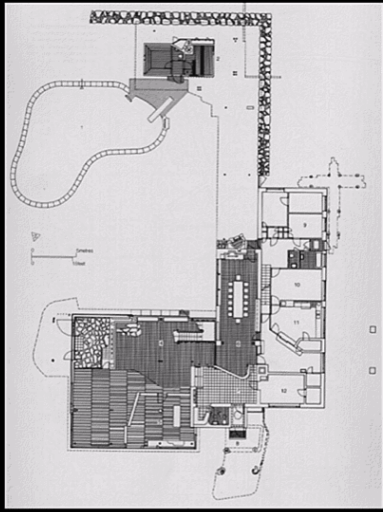


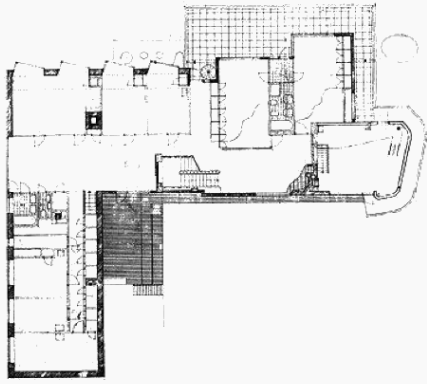






ASYMMETRIC
VILLA MAIREA (1975)
ALVARO SIZA
ALVARO SIZA ARCHITECTS





GreatBuildings.com









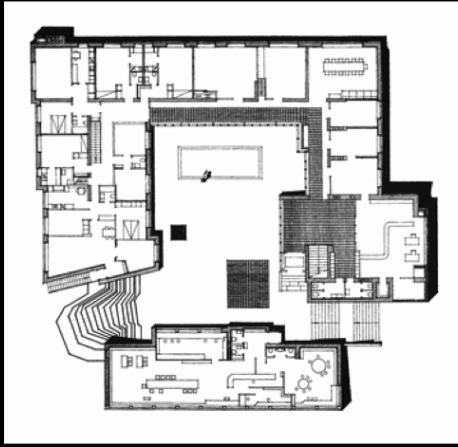


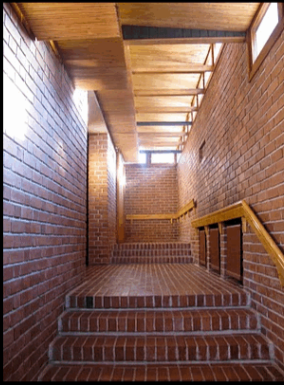
Alvar Aalto, Säynätsalo Town Hall, 1952 – Central Finland





"A similar tactile sensitivity is evident in the finishing of the public circulation in Aalto's Säynätsalo Town Hall of 1952."





"The main route leading to the second-floor council chamber is ultimately orchestrated in terms which are as much tactile as they are visual. Not only is the principal access stair lined in raked brickwork, but the treads and risers are also finished in brick. The kinetic impetus of the body in climbing the stair is thus checked by the friction of the stairs..."

DENSITY

The only indispensable material factor in the generation of power is the living together of people. Only where men live so close together that the potentialities for action are always present will power remain with them and the foundation of the cities...

Hannah Arendt, quoted by Kenneth Frampton

Place

Space

Region

Agency



RE

Repurposing Materials in Architecture,
Art + Design
Dallas, Texas

Wanda Dye, Owner and Director

<http://www.facebook.com/pages/Repurposing-Materials-in->

Architecture-Art-Design

RETROFITTING DALLAS

In collaboration with a local urban design and activist team, the design studio executed two projects in retrofitting blighted sites within the city of Dallas.



"Build a Better Boulevard" - Reclaimed and recycled materials for benches, columns and shade - cedar fencing and vinyl billboard



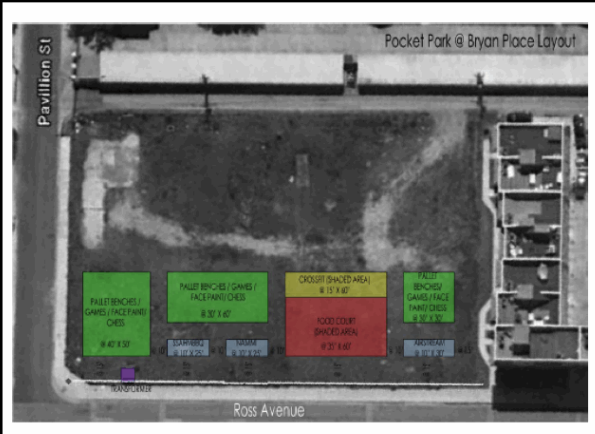
"Build a Better Boulevard" - Designing and constructing modular/adaptable bench/table



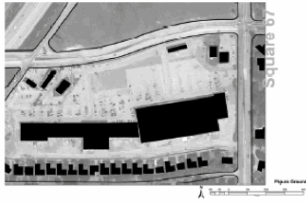
"Build a Better Boulevard" - Various configurations and packing options of bench/table



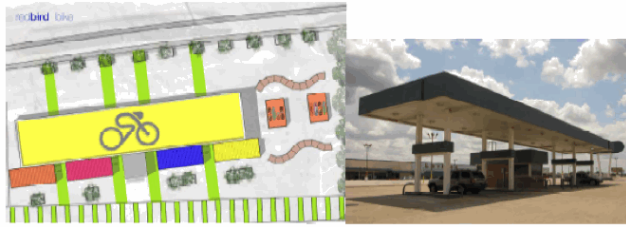
"Build a Better Boulevard" - The community enjoying the final installation of the temporary outdoor food court/pocket park



"Build a Better Boulevard" - Proposed site plan for temporary pocket park/food court



"Square 67" - Existing site conditions



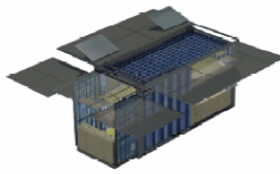
"Square 67" - Proposed Red Bird Bike and food court through retrofitting existing gas station



*Square 67 - Proposed Red Bird Bike and food court through retrofitting existing gas station

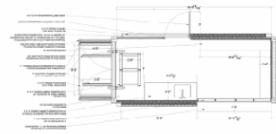


"Square 67" – Sense of place composite images demonstrating tactical programming scenarios through shipping container retail and various recreational activities



CAFE PROPOSAL FOR SHIPPING CONTAINER - PLAN VIEW

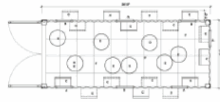
SCALE: 1/8" = 1'-0"



"Square 67" - Café design proposal retrofitting shipping container



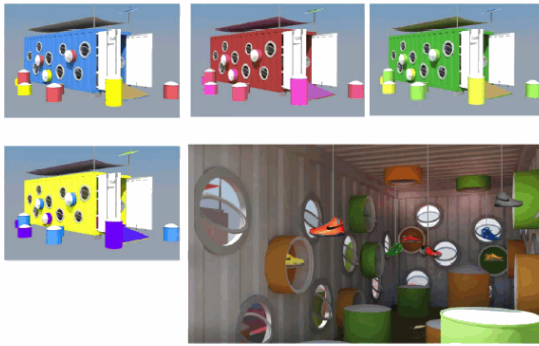
LEGENDA



- 1. Mesa
- 2. Silla
- 3. Sillón
- 4. Sofá
- 5. Cama
- 6. Armario
- 7. Baño
- 8. Lavatorio
- 9. Fregadero
- 10. Pared
- 11. Puerta
- 12. Ventana
- 13. Escalera
- 14. Suelo
- 15. Techo
- 16. Iluminación
- 17. Ventilación
- 18. Suelo de agua
- 19. Suelo de drenaje
- 20. Suelo de concreto
- 21. Suelo de cerámica
- 22. Suelo de madera
- 23. Suelo de alfombra
- 24. Suelo de vinilo
- 25. Suelo de linóleo
- 26. Suelo de caucho
- 27. Suelo de goma
- 28. Suelo de plástico
- 29. Suelo de metal
- 30. Suelo de aluminio
- 31. Suelo de acero
- 32. Suelo de cobre
- 33. Suelo de oro
- 34. Suelo de plata
- 35. Suelo de diamante
- 36. Suelo de rubí
- 37. Suelo de zafiro
- 38. Suelo de esmeralda
- 39. Suelo de topacio
- 40. Suelo de cuarzo
- 41. Suelo de jade
- 42. Suelo de malachita
- 43. Suelo de malaquita
- 44. Suelo de jaspé
- 45. Suelo de ágata
- 46. Suelo de obsidiana
- 47. Suelo de cristal
- 48. Suelo de vidrio
- 49. Suelo de cerámica
- 50. Suelo de porcelana
- 51. Suelo de mármol
- 52. Suelo de granito
- 53. Suelo de travertino
- 54. Suelo de mármol negro
- 55. Suelo de mármol blanco
- 56. Suelo de mármol rojo
- 57. Suelo de mármol verde
- 58. Suelo de mármol azul
- 59. Suelo de mármol amarillo
- 60. Suelo de mármol naranja
- 61. Suelo de mármol púrpura
- 62. Suelo de mármol rosa
- 63. Suelo de mármol gris
- 64. Suelo de mármol negro
- 65. Suelo de mármol blanco
- 66. Suelo de mármol rojo
- 67. Suelo de mármol verde
- 68. Suelo de mármol azul
- 69. Suelo de mármol amarillo
- 70. Suelo de mármol naranja
- 71. Suelo de mármol púrpura
- 72. Suelo de mármol rosa
- 73. Suelo de mármol gris
- 74. Suelo de mármol negro
- 75. Suelo de mármol blanco
- 76. Suelo de mármol rojo
- 77. Suelo de mármol verde
- 78. Suelo de mármol azul
- 79. Suelo de mármol amarillo
- 80. Suelo de mármol naranja
- 81. Suelo de mármol púrpura
- 82. Suelo de mármol rosa
- 83. Suelo de mármol gris
- 84. Suelo de mármol negro
- 85. Suelo de mármol blanco
- 86. Suelo de mármol rojo
- 87. Suelo de mármol verde
- 88. Suelo de mármol azul
- 89. Suelo de mármol amarillo
- 90. Suelo de mármol naranja
- 91. Suelo de mármol púrpura
- 92. Suelo de mármol rosa
- 93. Suelo de mármol gris
- 94. Suelo de mármol negro
- 95. Suelo de mármol blanco
- 96. Suelo de mármol rojo
- 97. Suelo de mármol verde
- 98. Suelo de mármol azul
- 99. Suelo de mármol amarillo
- 100. Suelo de mármol naranja
- 101. Suelo de mármol púrpura
- 102. Suelo de mármol rosa
- 103. Suelo de mármol gris
- 104. Suelo de mármol negro
- 105. Suelo de mármol blanco
- 106. Suelo de mármol rojo
- 107. Suelo de mármol verde
- 108. Suelo de mármol azul
- 109. Suelo de mármol amarillo
- 110. Suelo de mármol naranja
- 111. Suelo de mármol púrpura
- 112. Suelo de mármol rosa
- 113. Suelo de mármol gris
- 114. Suelo de mármol negro
- 115. Suelo de mármol blanco
- 116. Suelo de mármol rojo
- 117. Suelo de mármol verde
- 118. Suelo de mármol azul
- 119. Suelo de mármol amarillo
- 120. Suelo de mármol naranja
- 121. Suelo de mármol púrpura
- 122. Suelo de mármol rosa
- 123. Suelo de mármol gris
- 124. Suelo de mármol negro
- 125. Suelo de mármol blanco
- 126. Suelo de mármol rojo
- 127. Suelo de mármol verde
- 128. Suelo de mármol azul
- 129. Suelo de mármol amarillo
- 130. Suelo de mármol naranja
- 131. Suelo de mármol púrpura
- 132. Suelo de mármol rosa
- 133. Suelo de mármol gris
- 134. Suelo de mármol negro
- 135. Suelo de mármol blanco
- 136. Suelo de mármol rojo
- 137. Suelo de mármol verde
- 138. Suelo de mármol azul
- 139. Suelo de mármol amarillo
- 140. Suelo de mármol naranja
- 141. Suelo de mármol púrpura
- 142. Suelo de mármol rosa
- 143. Suelo de mármol gris
- 144. Suelo de mármol negro
- 145. Suelo de mármol blanco
- 146. Suelo de mármol rojo
- 147. Suelo de mármol verde
- 148. Suelo de mármol azul
- 149. Suelo de mármol amarillo
- 150. Suelo de mármol naranja
- 151. Suelo de mármol púrpura
- 152. Suelo de mármol rosa
- 153. Suelo de mármol gris
- 154. Suelo de mármol negro
- 155. Suelo de mármol blanco
- 156. Suelo de mármol rojo
- 157. Suelo de mármol verde
- 158. Suelo de mármol azul
- 159. Suelo de mármol amarillo
- 160. Suelo de mármol naranja
- 161. Suelo de mármol púrpura
- 162. Suelo de mármol rosa
- 163. Suelo de mármol gris
- 164. Suelo de mármol negro
- 165. Suelo de mármol blanco
- 166. Suelo de mármol rojo
- 167. Suelo de mármol verde
- 168. Suelo de mármol azul
- 169. Suelo de mármol amarillo
- 170. Suelo de mármol naranja
- 171. Suelo de mármol púrpura
- 172. Suelo de mármol rosa
- 173. Suelo de mármol gris
- 174. Suelo de mármol negro
- 175. Suelo de mármol blanco
- 176. Suelo de mármol rojo
- 177. Suelo de mármol verde
- 178. Suelo de mármol azul
- 179. Suelo de mármol amarillo
- 180. Suelo de mármol naranja
- 181. Suelo de mármol púrpura
- 182. Suelo de mármol rosa
- 183. Suelo de mármol gris
- 184. Suelo de mármol negro
- 185. Suelo de mármol blanco
- 186. Suelo de mármol rojo
- 187. Suelo de mármol verde
- 188. Suelo de mármol azul
- 189. Suelo de mármol amarillo
- 190. Suelo de mármol naranja
- 191. Suelo de mármol púrpura
- 192. Suelo de mármol rosa
- 193. Suelo de mármol gris
- 194. Suelo de mármol negro
- 195. Suelo de mármol blanco
- 196. Suelo de mármol rojo
- 197. Suelo de mármol verde
- 198. Suelo de mármol azul
- 199. Suelo de mármol amarillo
- 200. Suelo de mármol naranja

FLOOR PLAN

10/20/2020



"Square 67" - Retail design proposal retrofitting shipping container



"Square 67" - First steps in creating place, café shipping container, painting parking lot and "Fishing on the Square" event

The Better Block: A Living Charrette
Jason Roberts and Andrew Howard, founders
Dallas, Texas
<http://betterblock.org>

Cities around the U.S. are looking for tools to help redevelop communities that enable multi-modal transportation while increasing economic development, and reducing carbon emissions. The “Better Block” project is a demonstration tool that acts as a living charrette so that communities can actively engage in the buildout process and provide feedback in real time.

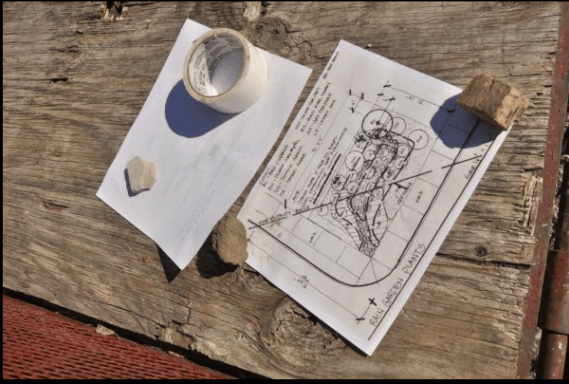
South Dallas
Grand Avenue







Unkempt parkway before work began



A simple plan for developing a rain garden



Work begins, digging a trench to lay out aggregate and collect water



Reclaimed stones to be broken up and used within the rain garden



Laying the stones



Completed curb, with native plants,
covered in decomposed granite.



The culmination of the Better Block was to host a Gospel BBQ with the neighborhood to show off our "Complete Street". Afterward, city council members, staff, and residents all came out and had the chance to enjoy the space as a true community destination.





Jon Rubin
<http://www.jonrubin.net>



Every weekend during the summer of 2003 a custom modified 1968 Chevy step-van, with the word FREE boldly painted on it's sides and a funk-based soundtrack coming from it's speakers, toured through one south Seattle neighborhood (Hillman City) much like an ice cream truck. But instead of selling ice cream, the van hosted local residents or families who shared, for free, what they like to make or do with their direct neighbors.



Waffle Shop and Conflict Kitchen

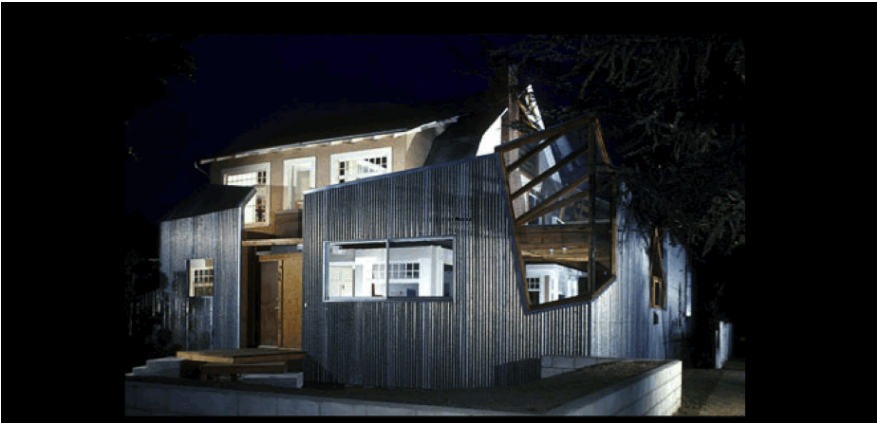






Conflict Kitchen is a take-out restaurant that only serves cuisine from countries that the United States is in conflict with. The food is served out of a take-out style storefront, which rotates identities every 6 months to highlight another country.

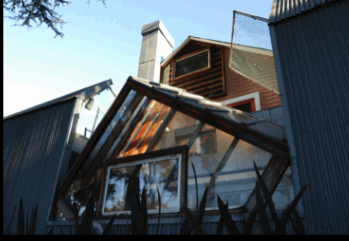
The Bilbao Effect



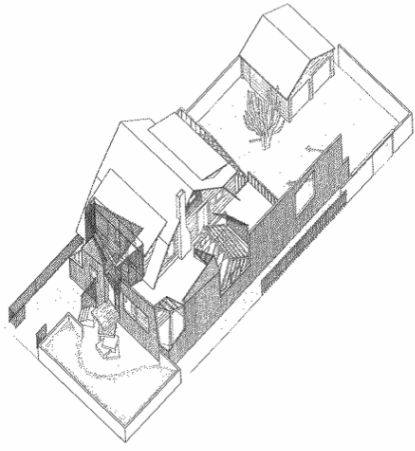
Frank Gehry, Frank Gehry House, 1977, Santa Monica, CA





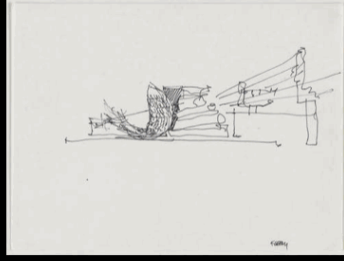






Frank Gehry House, Santa Monica, California

It was by accident that I got into the fish image. My colleagues were starting to replay Greek temples. Ya'know in the post-modern thing, I don't know, when was that... the 80s. That was hot, everybody was re-doing the past. I said, ya 'know, Greek temples are anthropomorphic. And three hundred million years before man was fish. If you wanna, if you gotta go back, if you're insecure about going forward, dammit, go back three hundred million years. Why are you stopping at the Greeks? So I started drawing fish in my sketchbook. and then I started to realize that there was something in it. -- Frank



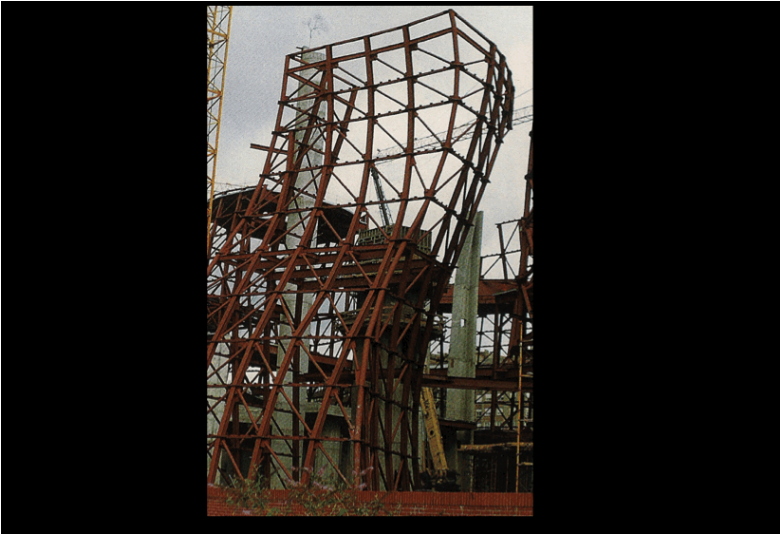
Frank Gehry, Fishdance Restaurant, 1986, Kobe, Japan

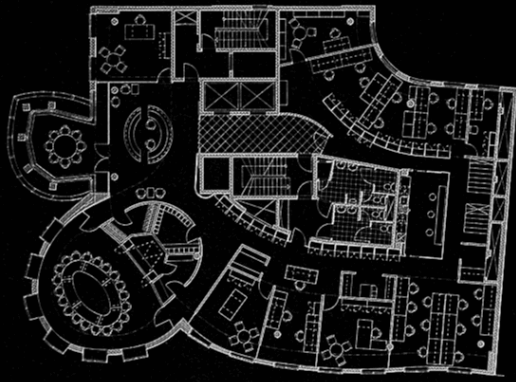


Frank Gehry, Dancing Building/Fred and Ginger, 1996, Prague, Czech Republic









Seventh-floor plan







Frank Gehry, Bilbao Guggenheim, Bilbao, Spain, 1997



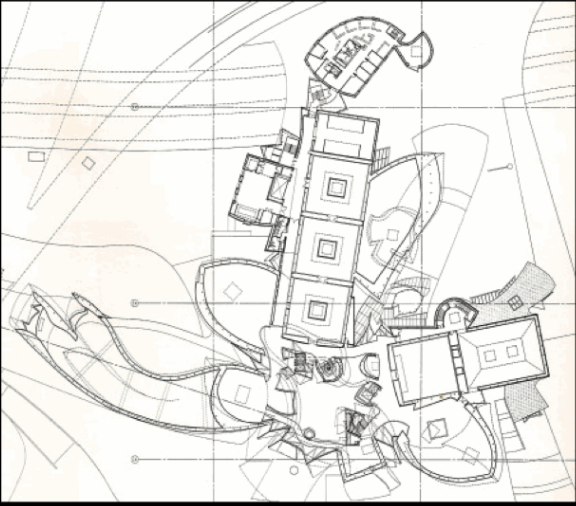


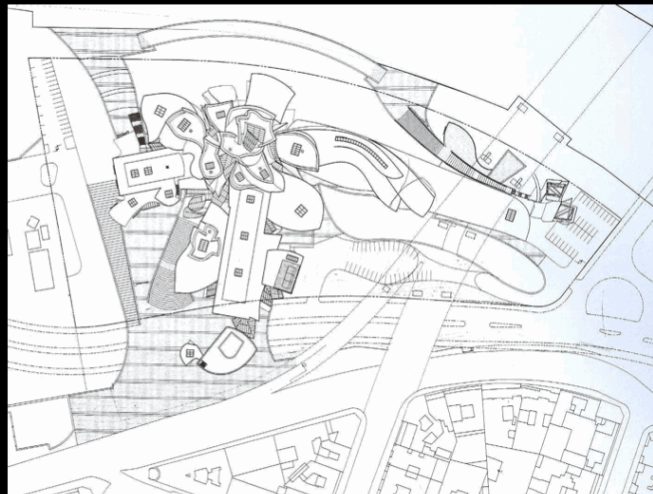


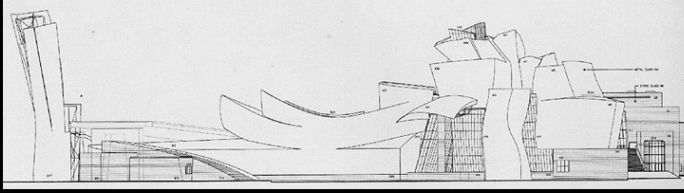












What is the Bilbao Effect?